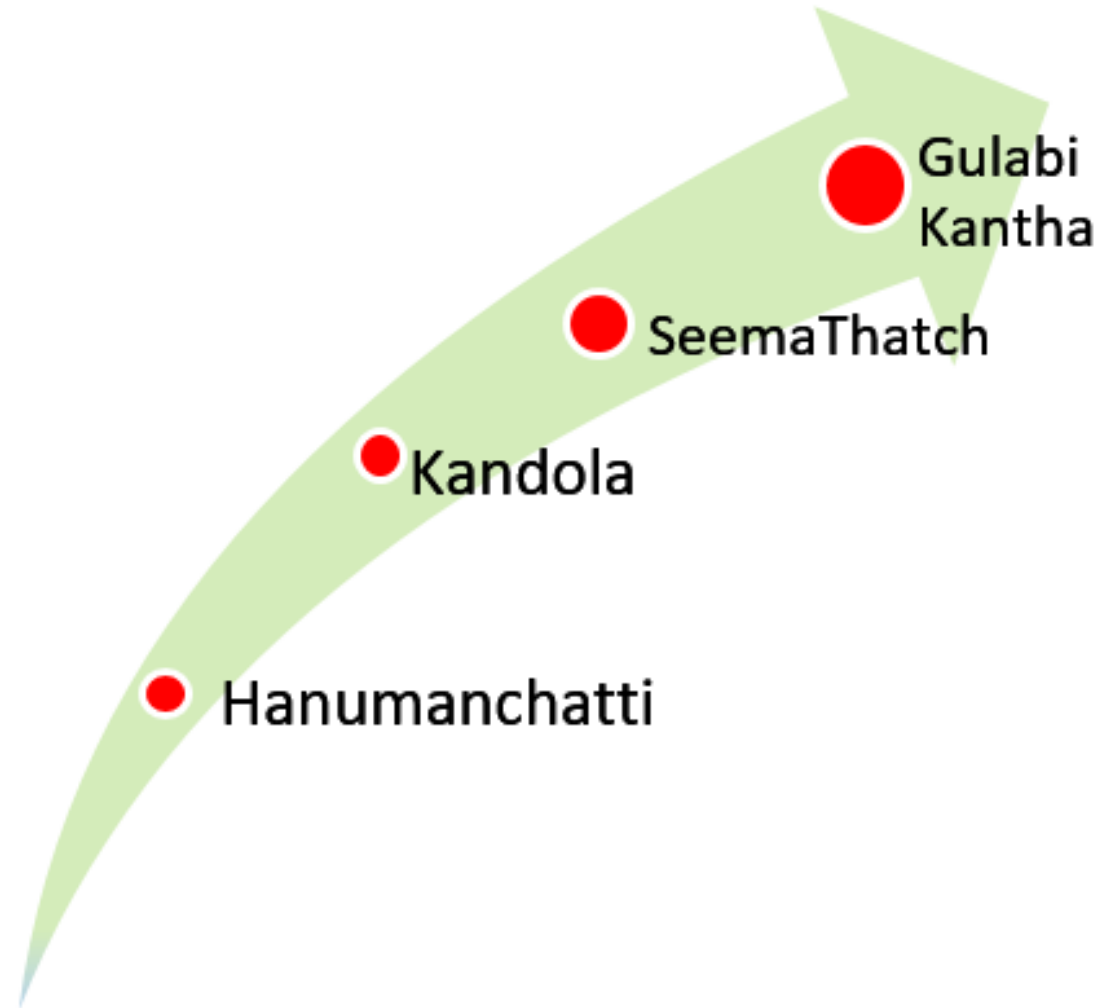


Himalayan Trek

Group 3



The Route

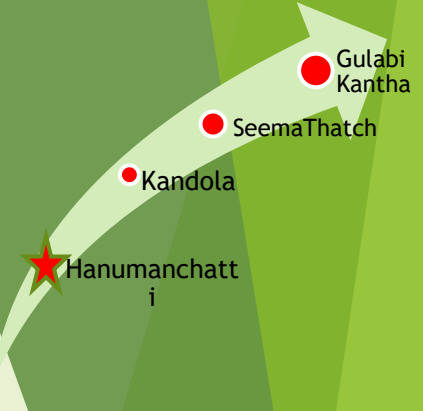


The journey begins...



Hanuman Chatti

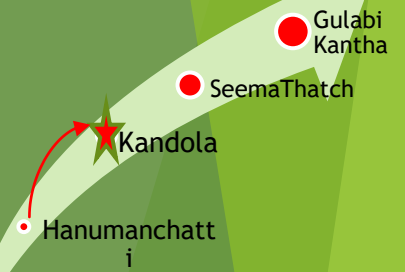
- ▶ Day 1: Mussorie to HanumanChatti
- ▶ Location
 - ▶ 2400 mts elevation
 - ▶ At confluence of Hanuman ganga and Yamuna Rivers
 - ▶ Riverside Scenic village
- ▶ Reached by 4:30 PM
- ▶ GMVN Guest House





Day 2 : Trek Starts

- ▶ Trek From Hanuman chatti to Kandola
- ▶ 6 km trek
- ▶ Village enroute – Nishni.
- ▶ Road – 3km concrete road & hiking trail after.
- ▶ Terrace farming.





the
JOURNEY
— IS JUST AS —
IMPORTANT
— AS THE —
DESTINATION



On way to Kandola



Kandola

- ▶ 2480 mts MSL
- ▶ Bugyal
- ▶ Reached by 1300 hours
- ▶ Camping
- ▶ Bonfire, Starlit Sky & Some fun



Some fun at Kandola

● Gulabi Kantha

● Seema Thatch

★ Kandola

● Hanumanchatti



Seema Thatch

- Day 3: Kandola to SeemaThatch
- 4 km Trek
- 3100 Mts MSL
- Steep Slopes
- Higher reaches - Snow slopes



At Seema thach



Seema Thatch @ 1 degree Celsius



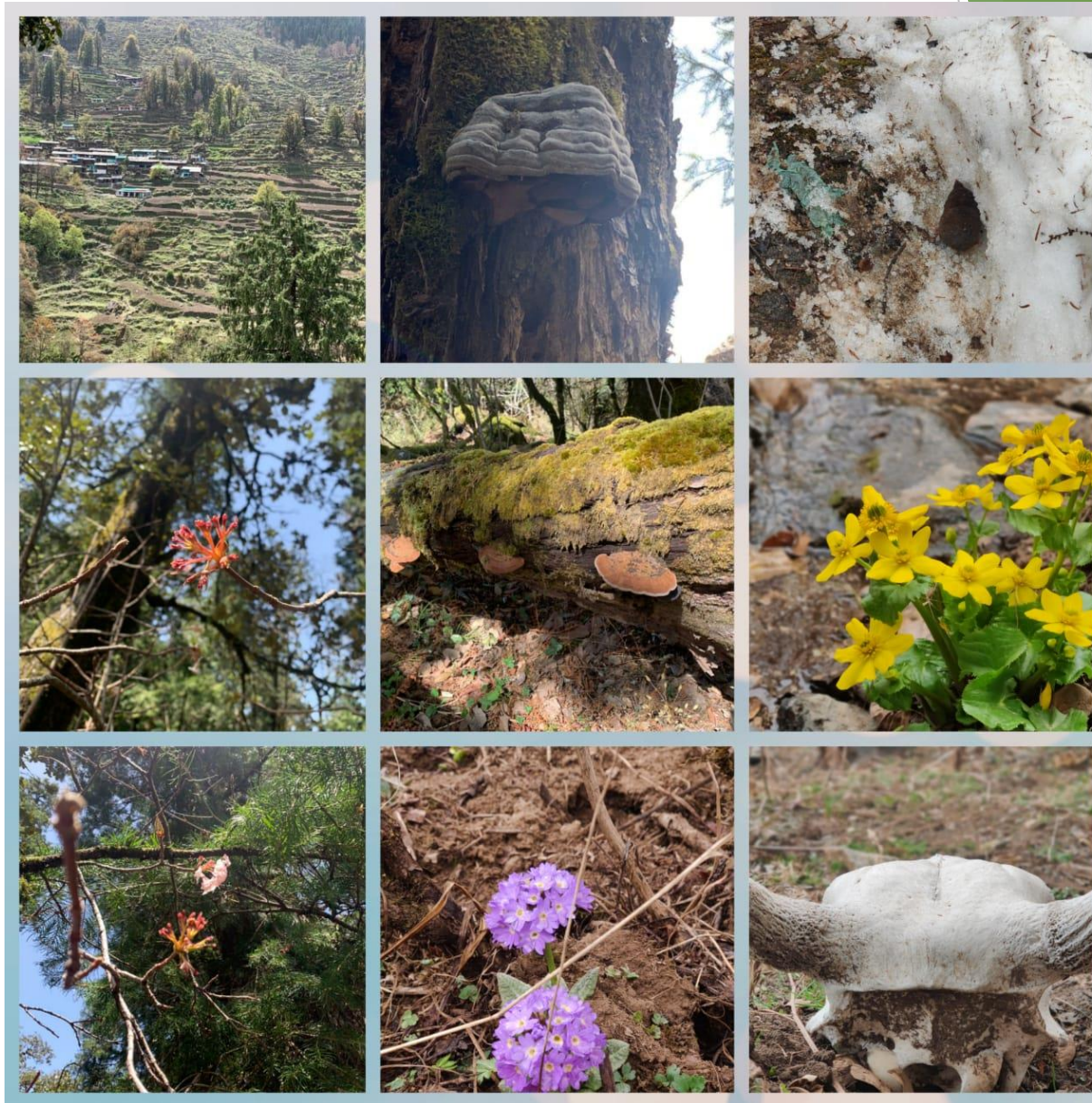
Snowy mornings!



Camaraderie



Flora and fauna



At Yamunotri



Special moments
during the
journey...



Dil chahta hai...



Take nothing but memories, leave nothing but footprints!

